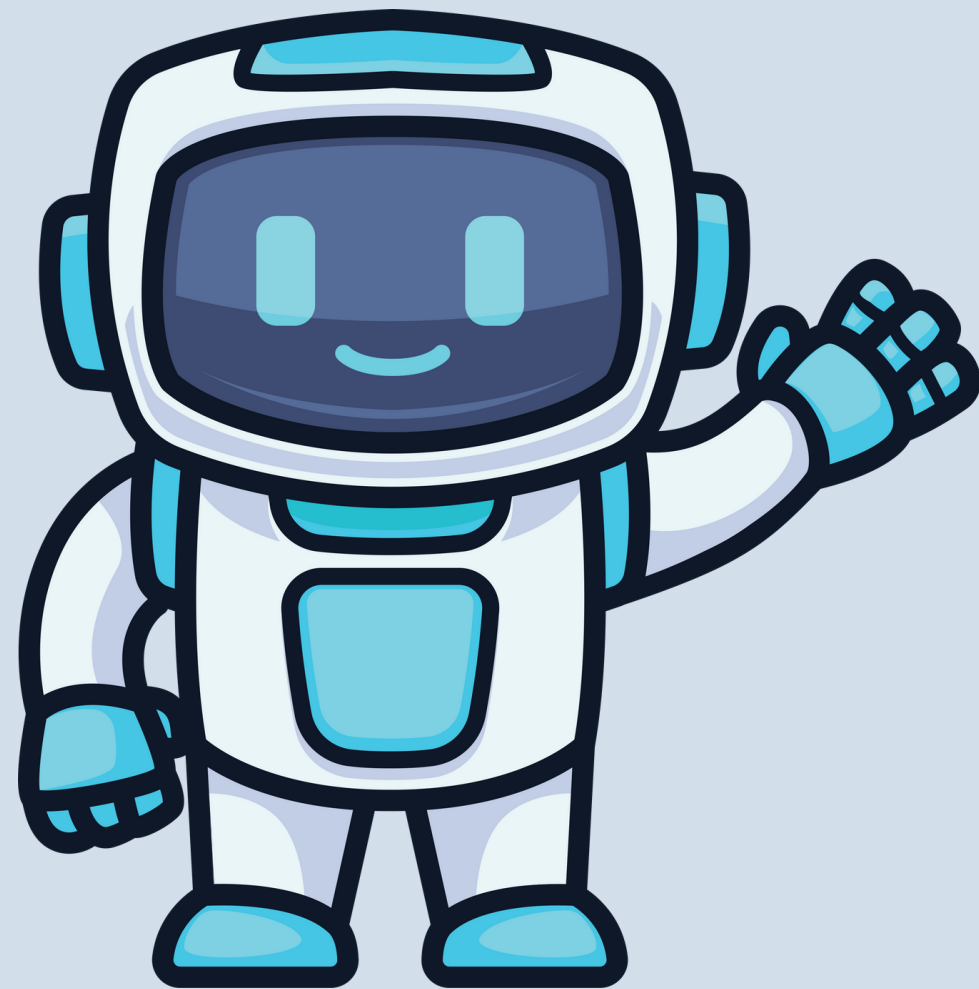
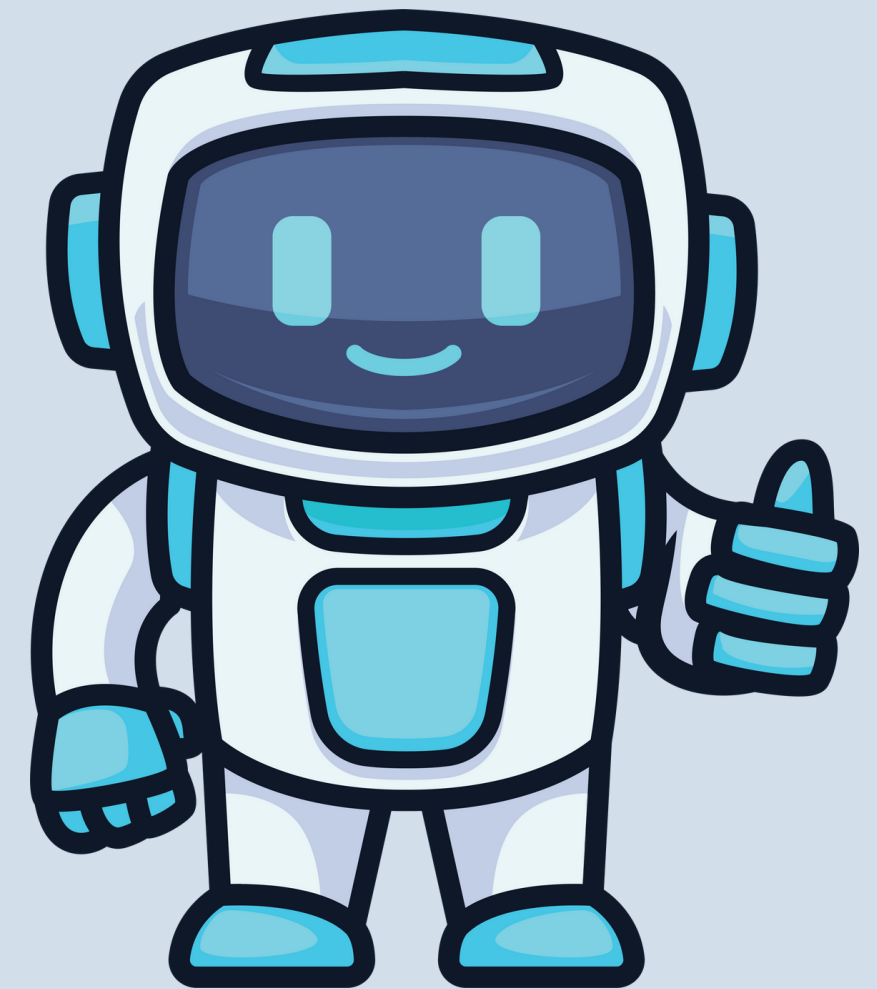




ROBOT HERO

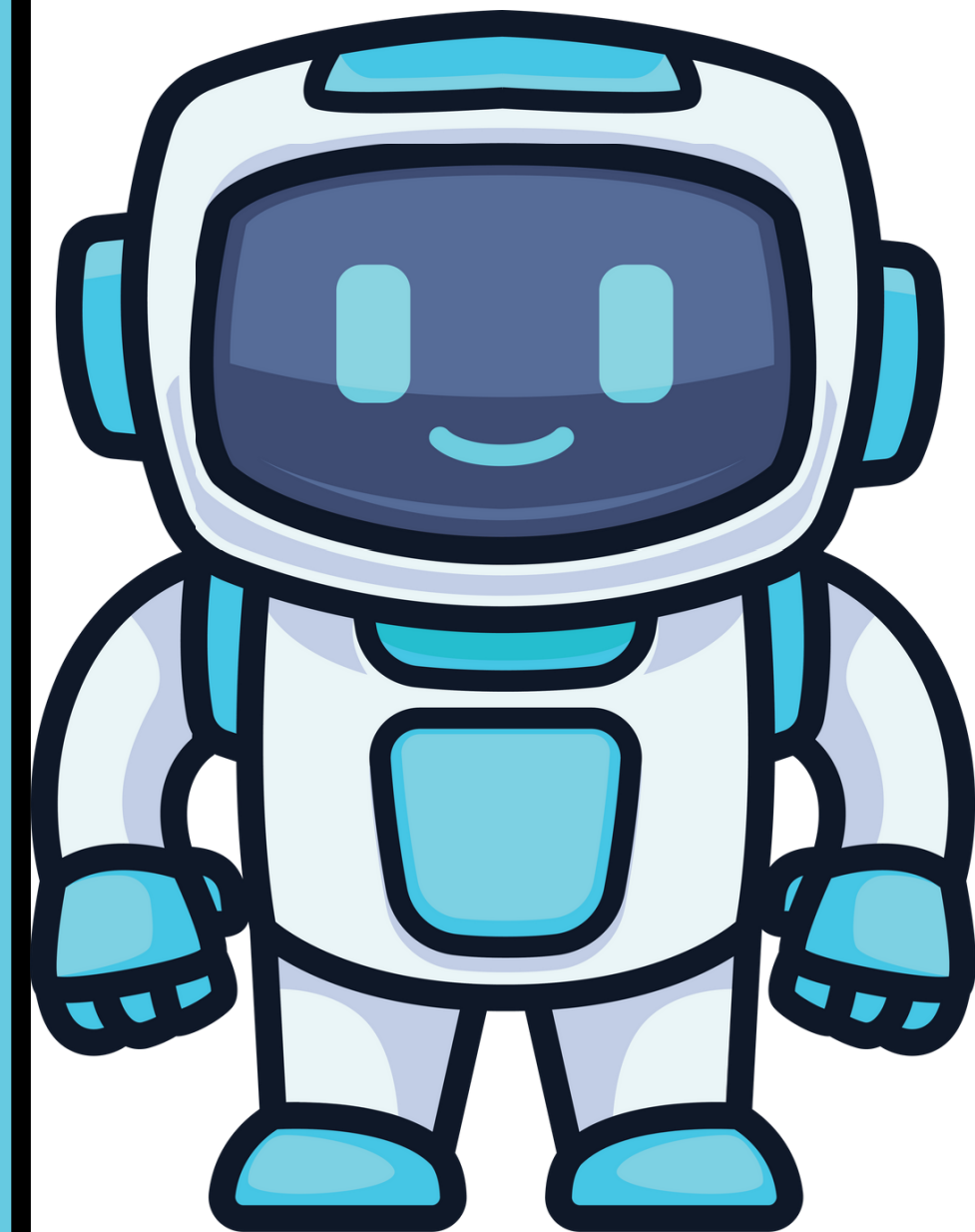


Relay Robot

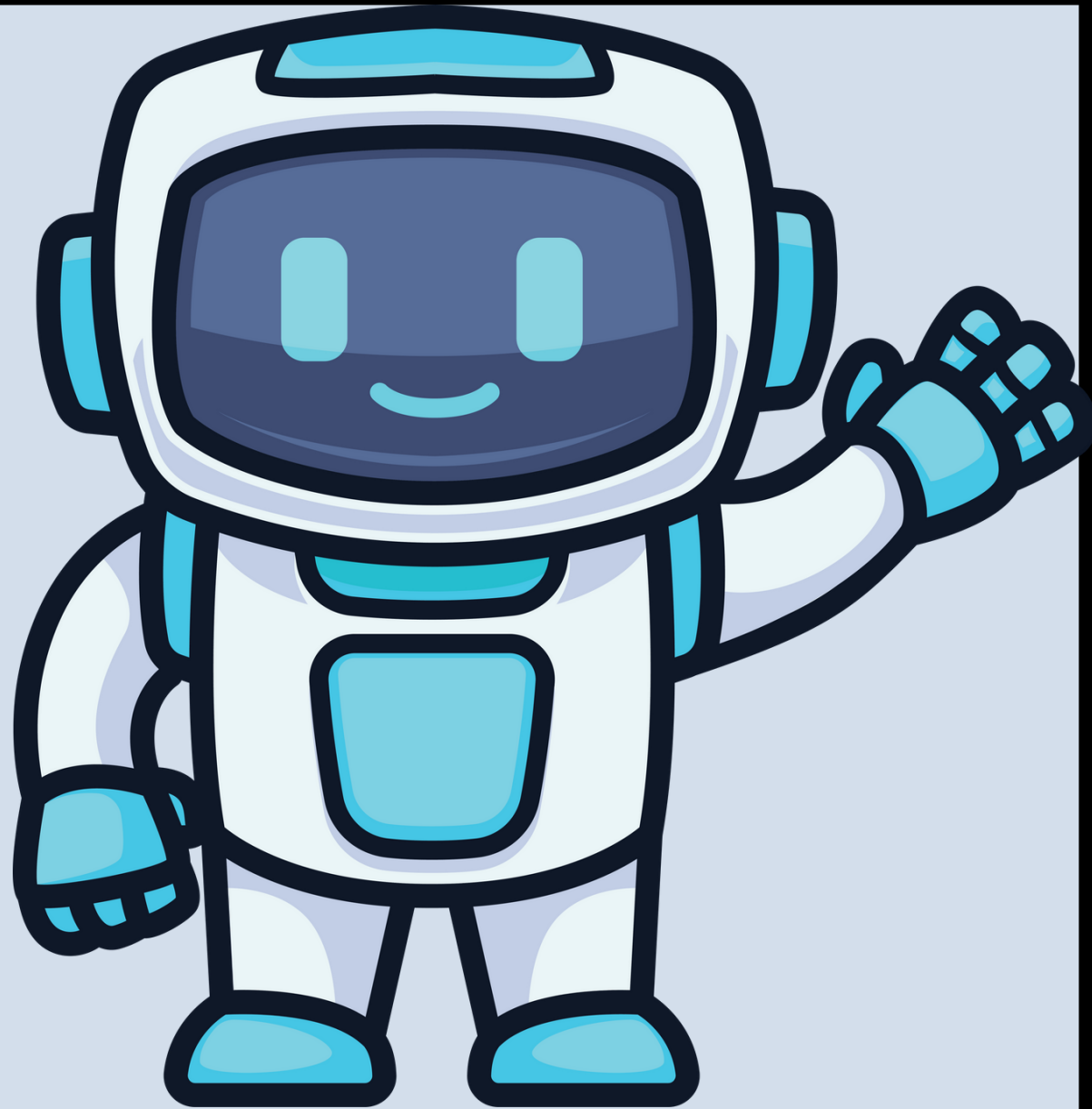


INSTRUCTIONS

- TEAMS ONLY CAN PARTICIPATE IN THE GAME.
- TEAM 3-6 MEMBERS.
- AGE:10-15 YEARS.
- EACH TEAM CAN HAVE ONLY ONE ROBOT.
- IT IS FORBIDDEN TO CHANGE ROBOTS DURING THE COMPETITION.
- TEAMS ARE NOT ALLOWED TO SHARE THE SAME ROBOT.



ROBOT SPECIFICATION



- The Robot must be autonomous.
- Its maximum overall dimension must be up to 35cm Width x 35cm Length.
- Any kit is allowed, only one processor, 4 motors and 4 sensors are allowed.

prohibited things

- Glue in wheels
- vacuum pumps and magnets
- Connecting the Robot (bluetooth, wifi, etc.), with a computer, phone and any other electronic device during the race.
- The use of pullback motors
- Remote control.
- The use of pneumatic

Technical inspection

TECHNICAL INSPECTION INCLUDES INSPECTION OF THE ROBOT SIZE AND CONDITION.

DURING THE INITIAL TECHNICAL CHECK THE TEAM WILL BE ASKED QUESTIONS ON ROBOT PROGRAMING .

IF THE TEAM DOES NOT MEET THE SPECIFICATIONS, HE WILL NOT BE ALLOWED TO COMPETE AND WILL BE AUTOMATICALLY DISQUALIFIED FROM THE EVENT.

GAME

- THE ORGANIZERS WILL HOLD A LOTTERY 2 WEEKS BEFORE COMPETITION IN ORDER TO SELECT THE TEAM ALLIANCES.
- AN ALLIANCE IS CREATED BETWEEN TWO GROUPS.
- TEAMS WILL BE ABLE TO COMMUNICATE WITH THEIR ALLIANCE TEAM IN ORDER TO COME UP WITH THEIR STRATEGY.
- ALLIANCES DIVIDED TO GROUPS.EACH GROUP CONTAIN 2 ALLIANCES.
- 2 ALLIANCES WILL COMPETE TOGTHOR AT THE SAME TIME.
- TEAM LEADER START 1ST ROBOT AFTER THE REFEREE'S WHISTLE BY PRESSING THE START BUTTON.

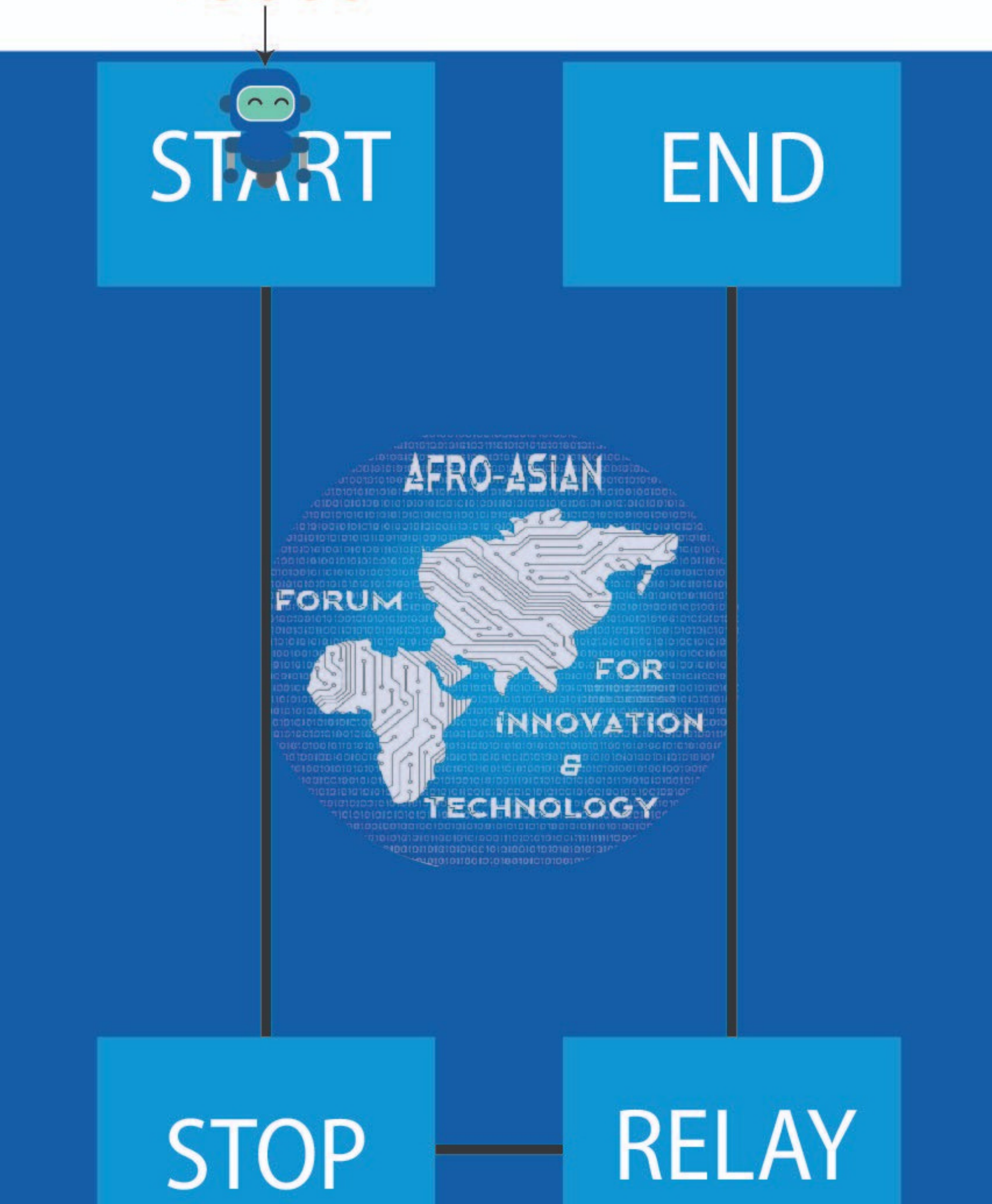
GAME(CONTINUED)

- THERE SHOULD BE A 5 SECONDS TIME DELAY BEFORE THE ROBOT.
- 1ST ROBOT FINISH 1ST TRACK AND STOP AT THE RELAY SQUARE.
- . THE 2ND ROBOT BEGIN THE JOURNEY PROCEEDING OVER BLACK LINE OF 2ND TRACK AND FINISH AT THE END SQUARE.
- THE ALLIANCE FINISH FIRSTLY IN CORRECT WAY WILL BE THE WINNER OF THIS GROUP.
- THE WINNER FROM EACH GROUP PLAY TOGETHER A NEW MATCH.
- ACCORDING TO NUMBER OF GROUPS THE JUDGE DIVIDED THEM BY LOTTAREY.

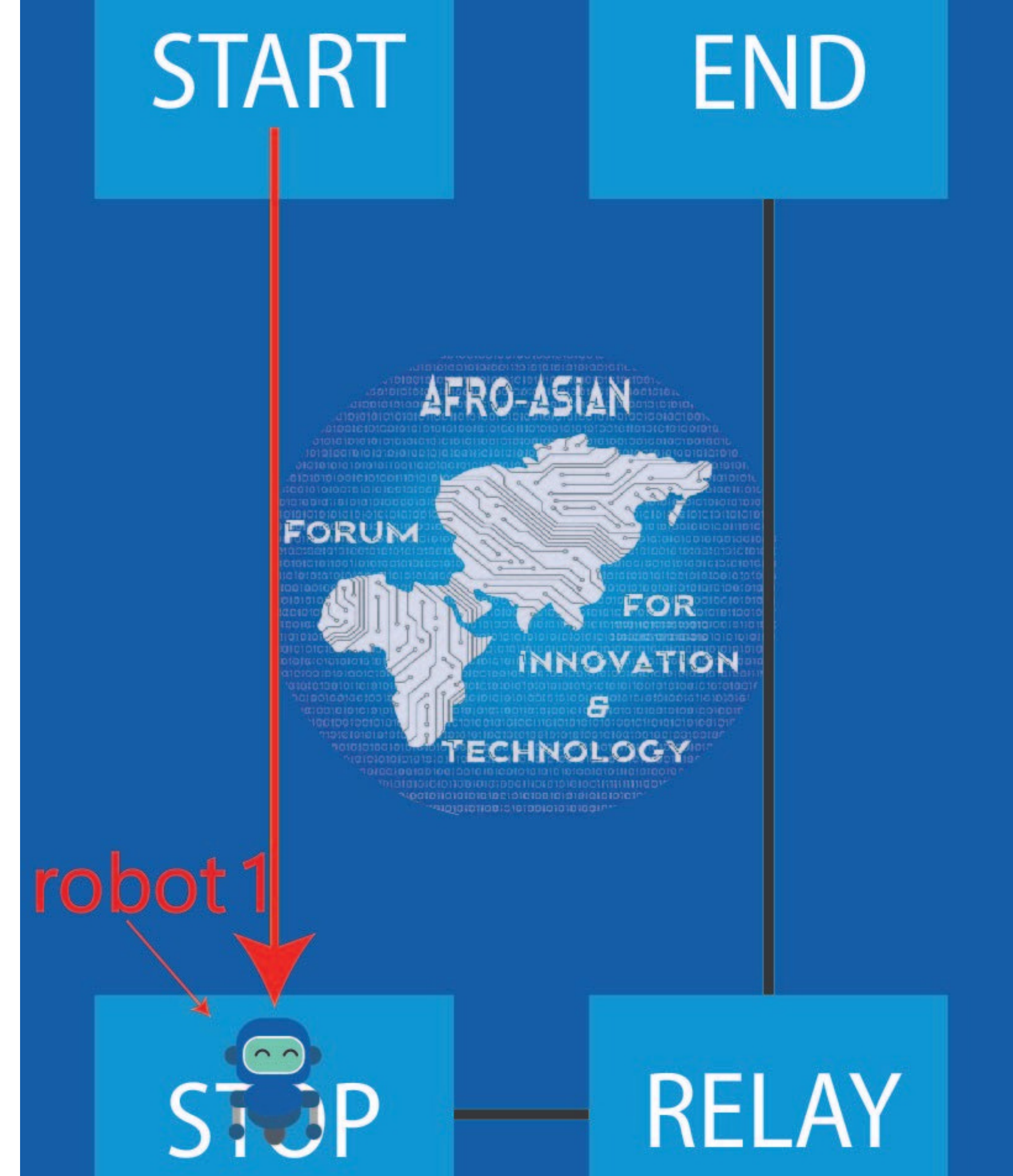
GROUND SPECIFICATION



- THE SIZE OF THE TRACK IS 2M X 2M.
- THE LINE IS BLACK AND 1.8CM WIDE.
- EACH SQUARE FROM 4 ESSENTIAL SQUARE IS 40*40
- THE LENGTH OF THE BLACK BETWEEN 2 SQUARES IS 120CM.



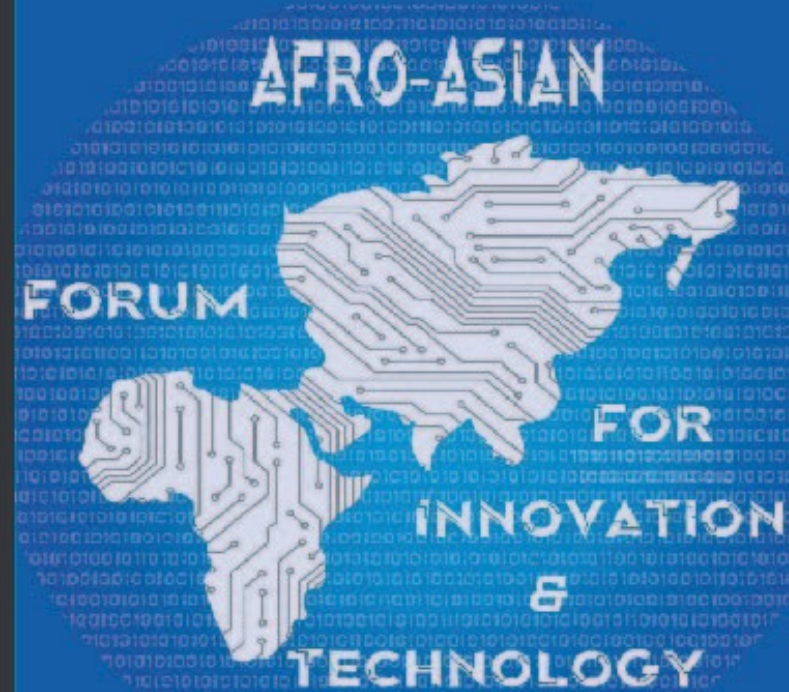
1



2

START

END



robot 2

STOP

RELAY



3

robot 2

START

END



STOP

RELAY

4

ROUNDS

preparation round:

alliances have 2 hours for trials according to day timetable.

penalty during main matches :

- If a Robot Athlete misses the black line.
- If a Robot Athlete does not take over.

CONTACT US



www.africaniat.com

info@africaniat.com

